

# Karmøy

The world's best  
starting point



# Hydro Karmøy





# A renewable industry at Karmøy for 50 years

«It had to be aluminium»



# Making competence our competitive edge

685

employees

Large employer at Karmøy



84%

certificate

Leading competence



1600

apprentices

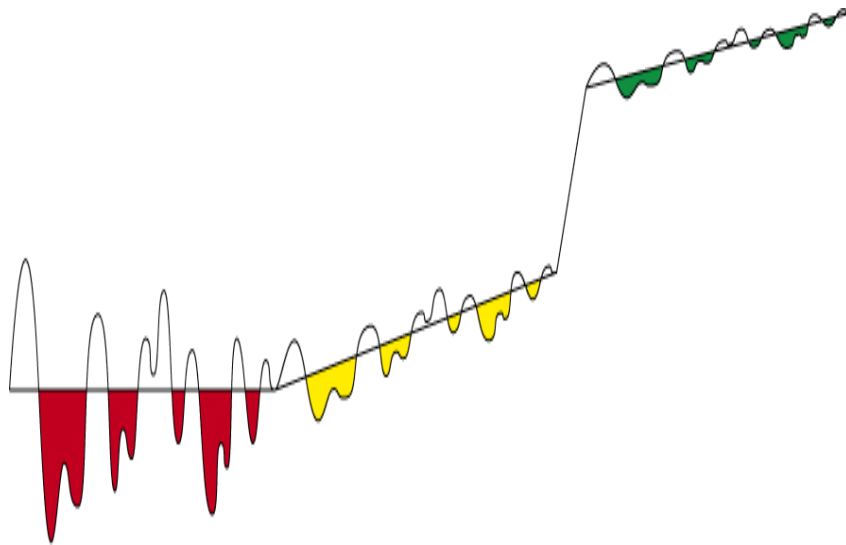
Research and education



# Investing in developing our precision culture

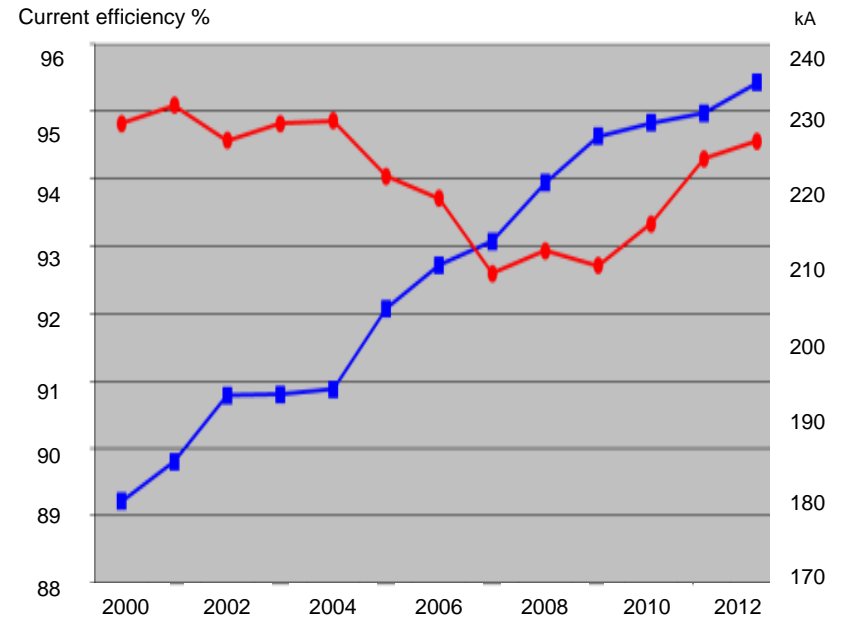
## World-class production requires stability

- Fire fighting
- Stability
- Precision culture

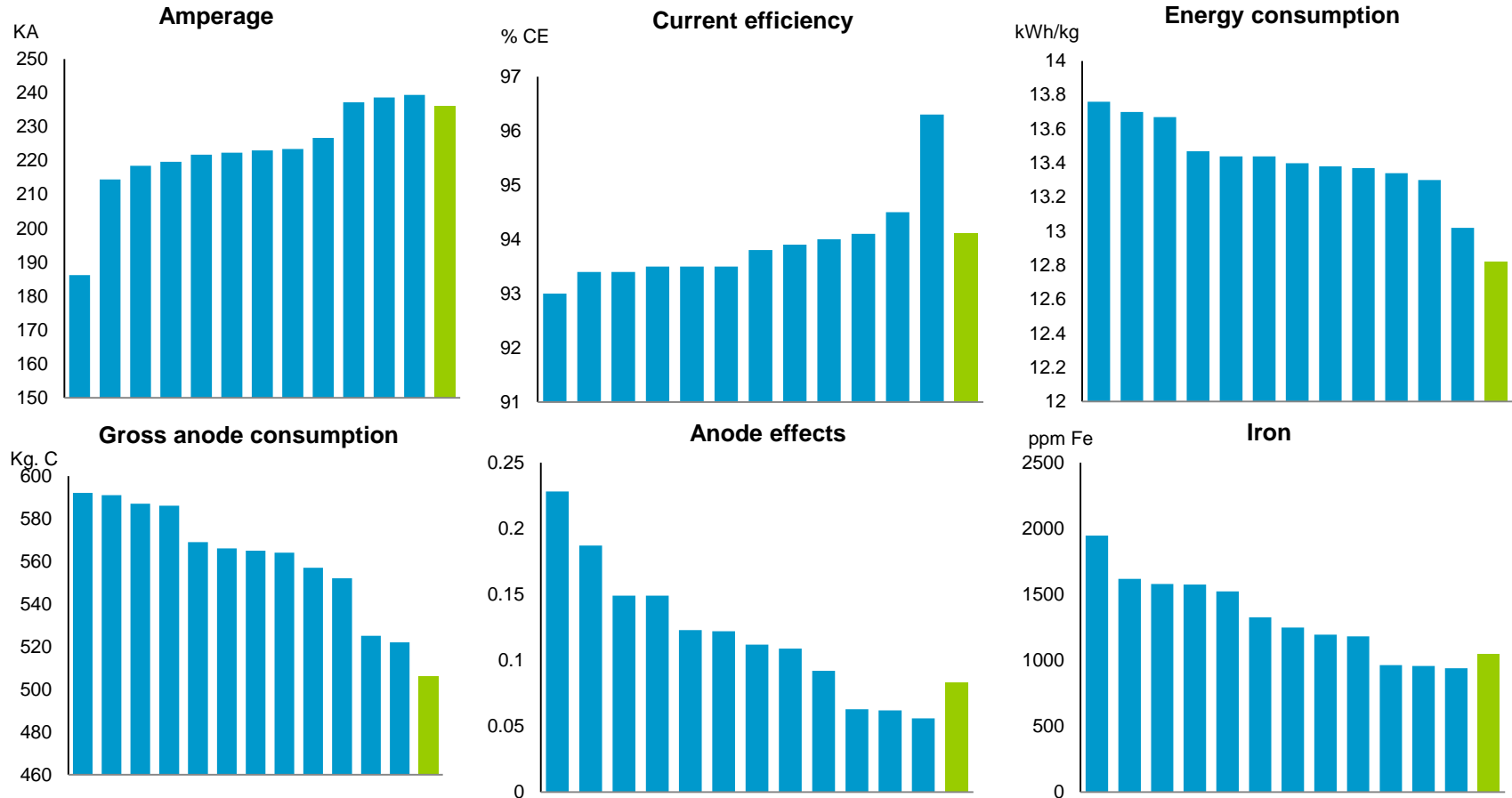


## Increased precision, increased current efficiency

- Amperage
- Current efficiency



# World leading in AP18-technology electrolysis



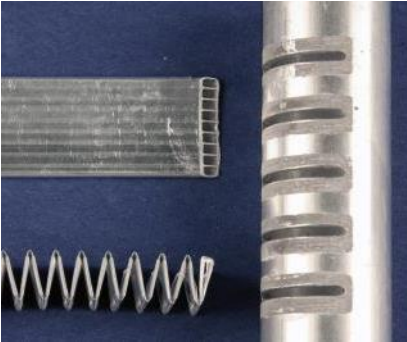
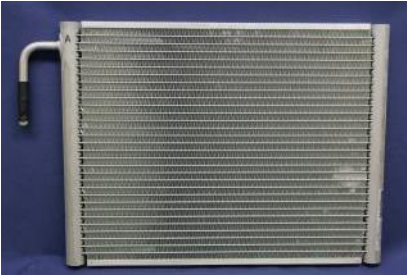
■ Karmøy  
■ Competitors

# Even big extrusion ingots start small

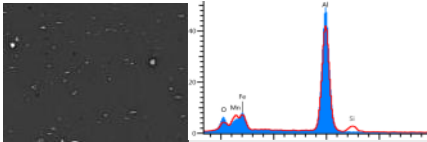
30 nanometers the start for 192,000 tonne aluminium



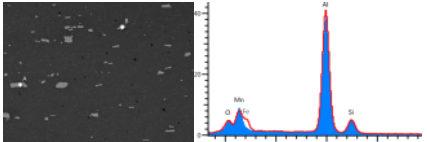
Extrusion ingot



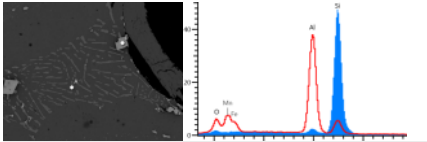
Heating exchanger



Tube



Fin



Fillet

# Safety during your visit



## **Strong magnetic fields in the pot rooms**

- ✓ Pacemaker? Pregnant?
- ✓ Do not bring watches and credit cards

## **Mandatory clothing:**

- ✓ Hard hat, safety glasses and visitors coat
- ✓ Breathing mask in the pot rooms

## **During the visit**

- ✓ No liquids allowed
- ✓ Do not touch aluminium products
- ✓ Keep distance to machines and furnaces
- ✓ Stay close to the guide and group



