

Renewable energy solutions for sustainable industries



Olivier Girardot, CEO

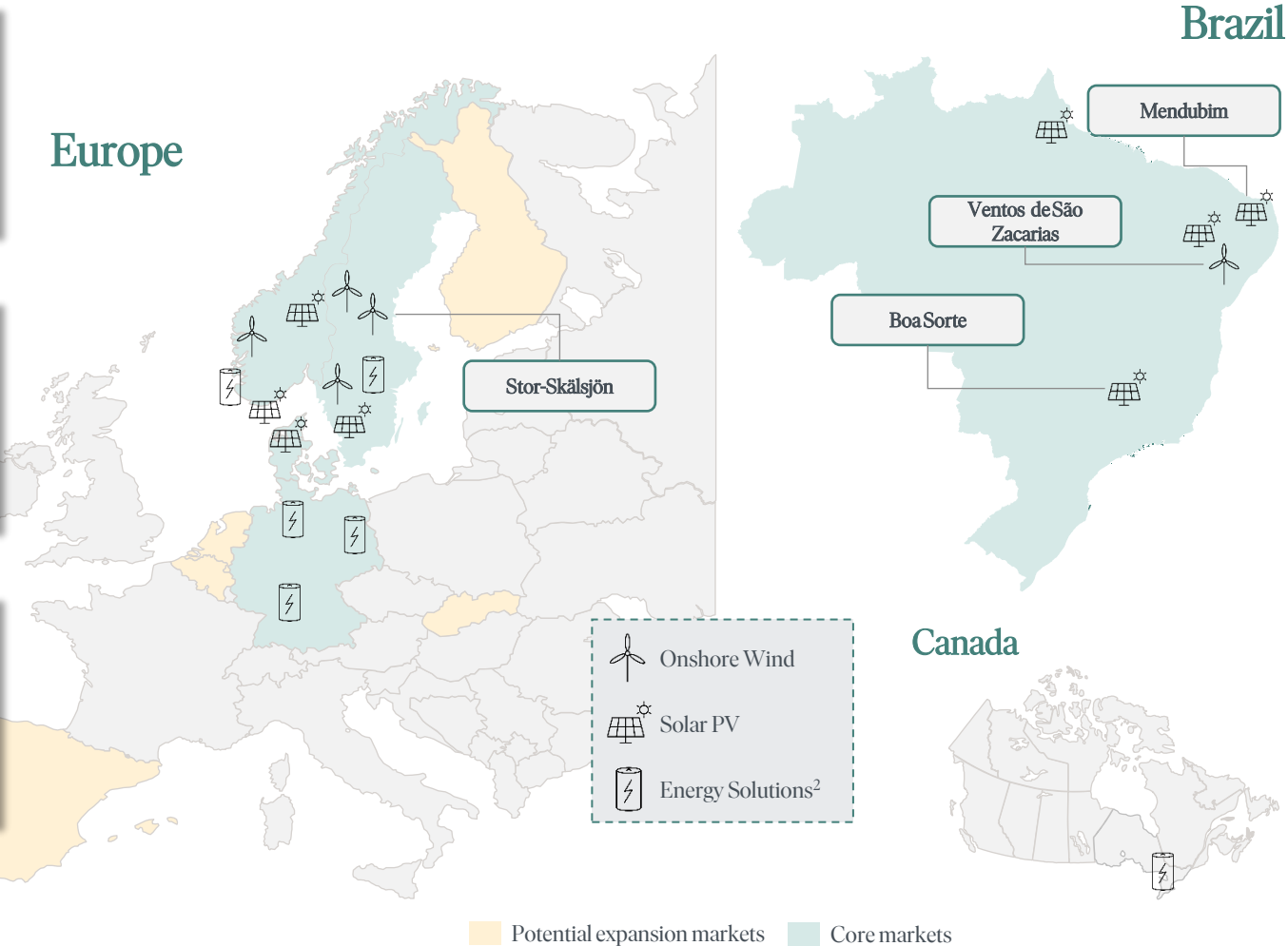
Pareto Securities' Annual Energy Conference

Hydro Rein – three years of fast-paced growth

5.3 TWh p.a.¹
already sourced
under long-term PPAs

>16 TWh p.a.
additional potential
under development

~120 GWh p.a.
potential of power savings or
production behind the meter²



8.4 GW
gross capacity
in portfolio

>60
total # of renewable projects
in portfolio

~30
total # of sites in scope in
Energy Solutions pipeline

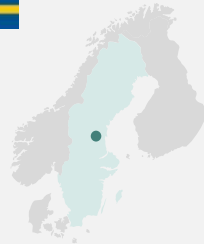
Notes: (1) Including Vista Alegre (2) From EnSol mature pipeline or projects in construction & operation

1.7 GW of renewables projects reaching COD in 2024



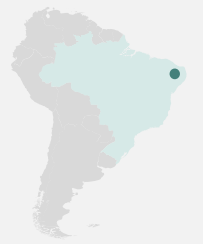
Stor-Skälsjön

Location: Sundsvall, SE2
Plant Capacity: 260 MW
Annual Production: 807 GWh
REIN Ownership: 25%
COD: Q1/2024



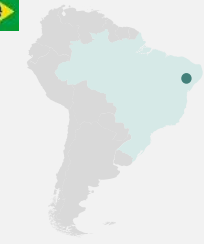
Mendubim

Location: Rio Grande do Norte, Northeast
Plant Capacity: 531 MWp
Annual Production: 1227 GWh
REIN Ownership: 33.3%
COD: Q1/2024



Ventos de São Zacarias

Location: Piauí, Northeast
Plant Capacity: 456 MW
Annual Production: 1957 GWh
REIN Ownership: 44.9%
COD: Q4/2024



Boa Sorte

Location: Minas Gerais, Southeast
Plant Capacity: 438 MWp
Annual Production: 964 GWh
REIN Ownership: 30%
COD: Q1/2024



How are we decarbonizing industries?

Partnering with Fritzøe Energi

- Combining 300 years of industrial heritage to develop renewable energy in Vestfold, Telemark and Buskerud in a region with significant industrial need for more power
- Working closely with the local communities, aiming for the lowest possible impacts on nature and co-existence with existing forestry operations



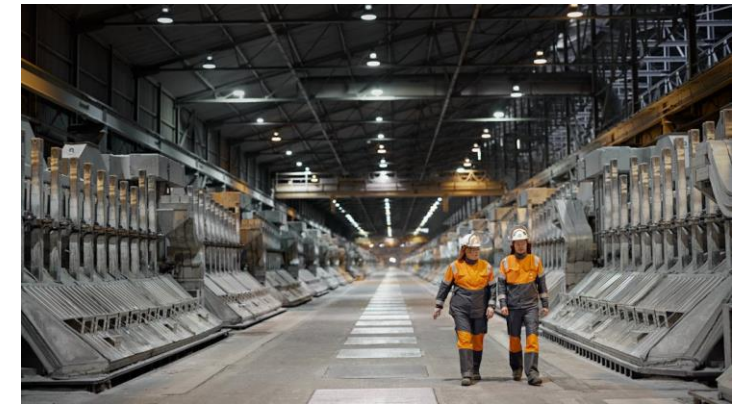
Alunorte decarbonization

- Supporting one of the world's largest decarbonization projects
- Power purchase agreements with Mendubim solar complex and Ventos de São Zacarias wind complex in Northern Brazil
- In total, switching from fossil fuels to electric boilers at Alunorte could save more than 2 million tons CO₂/year



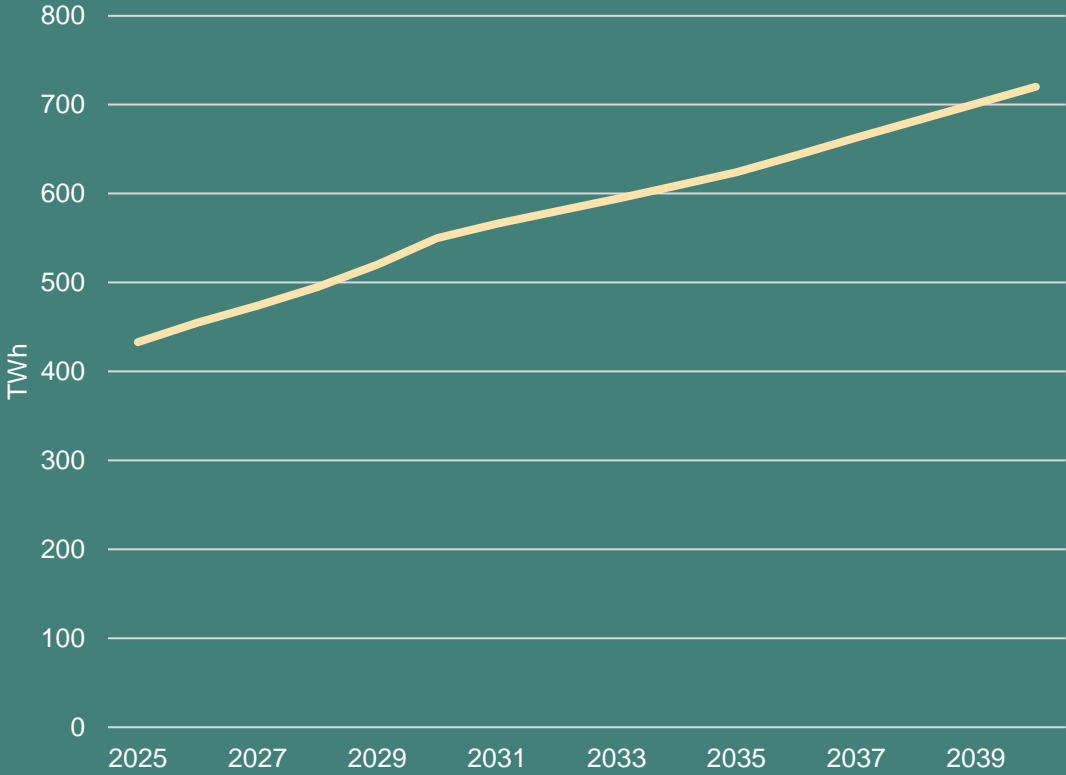
100 GWh of energy efficiency

- Working with Hydro's five aluminium smelters in Norway to save more than 100 GWh of electricity annually, corresponding to the consumption of 6,000 households
- Measures such as compressed air sensors, smart LED lighting systems, energy efficient pre-heating and real-time on-site energy management through Rein Hub

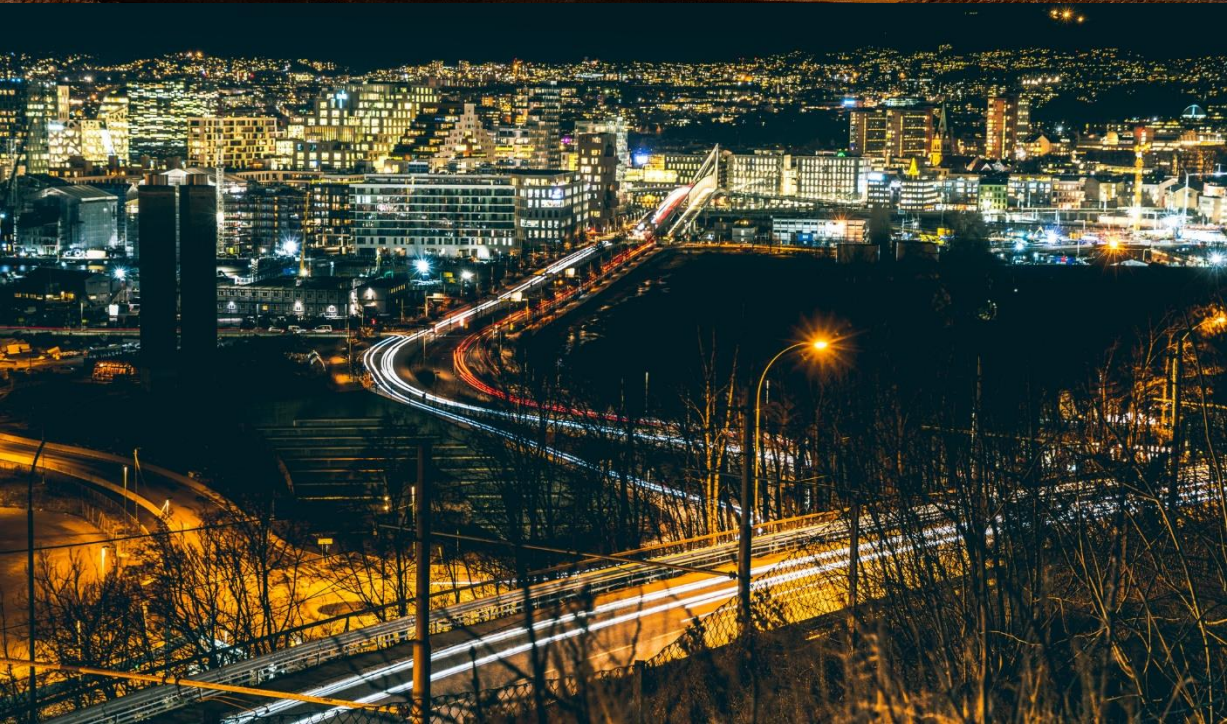


Demand for renewables in the Nordics to almost double by 2050

Electricity demand Nordic markets

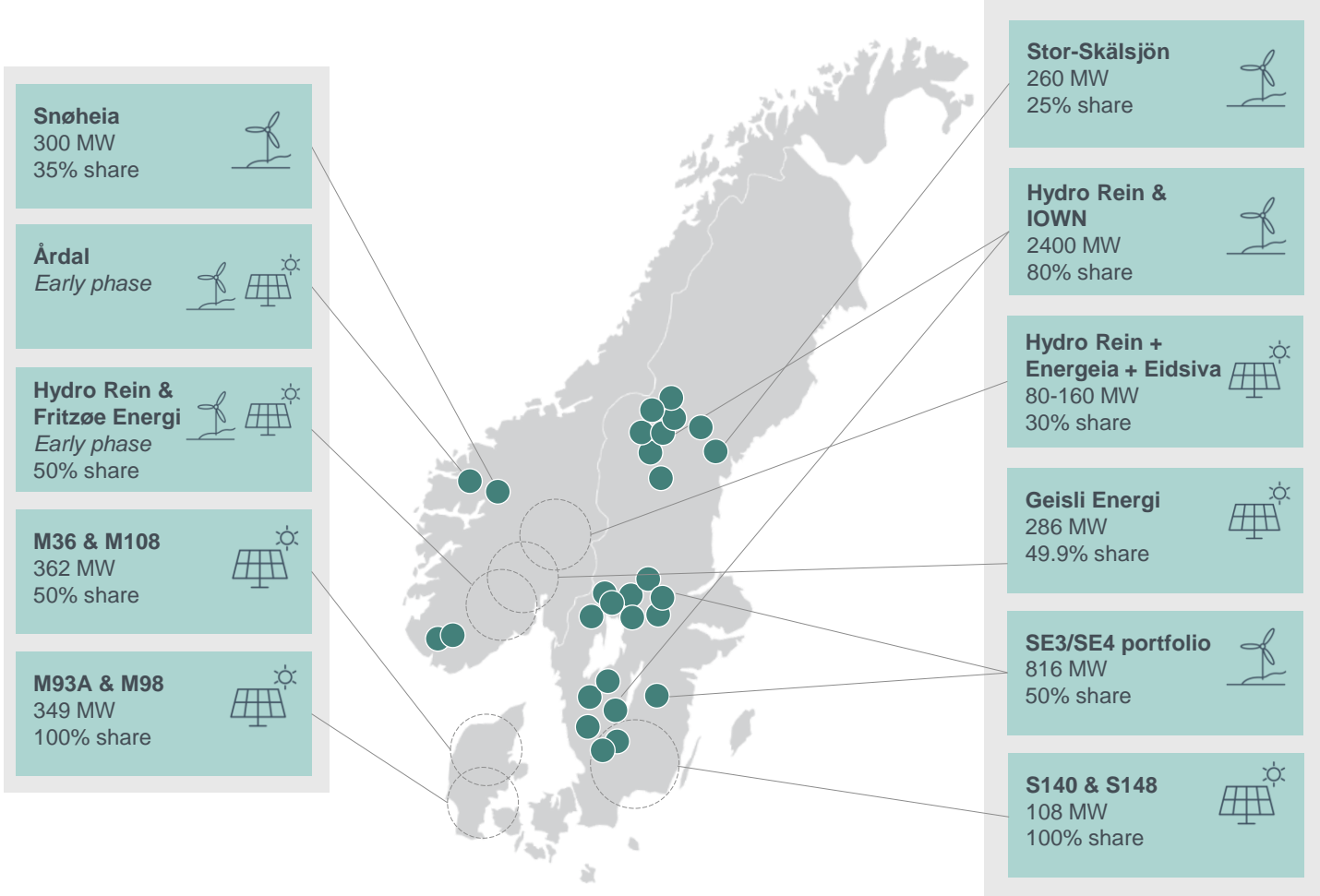


Source: THEMA Consulting

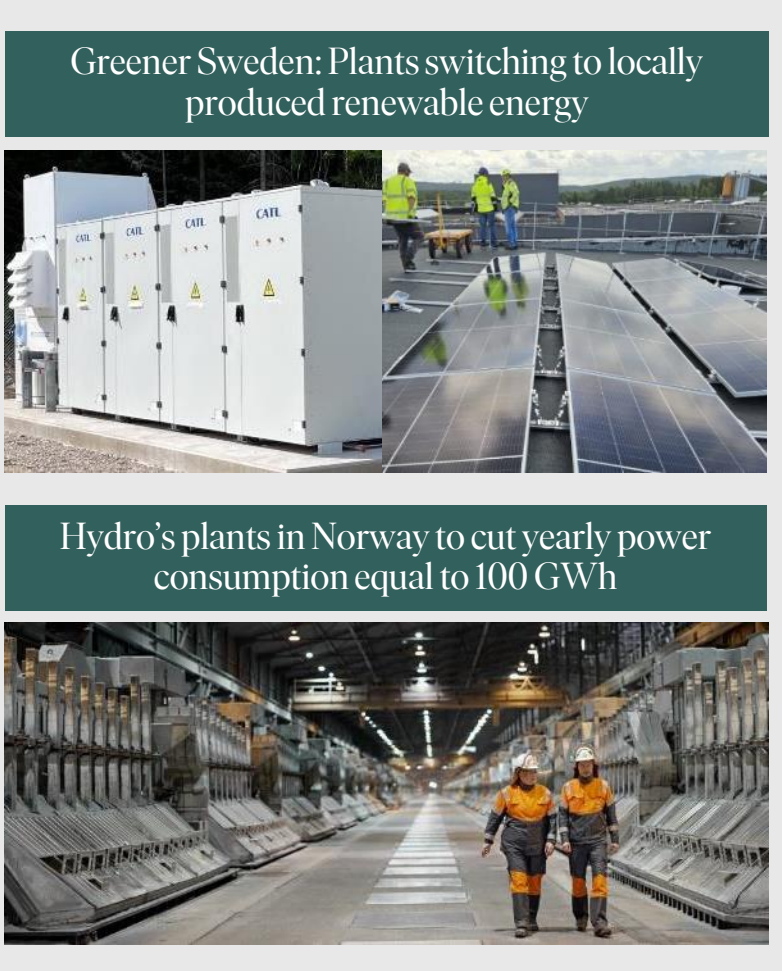


The COP28 challenge: tripling up and doubling down

Grid-scale portfolio:



Behind-the-meter projects:



Greener Sweden: Plants switching to locally produced renewable energy

Hydro's plants in Norway to cut yearly power consumption equal to 100 GWh



What does it take?

Competence



Attracting the best



Insourcing the right expertise



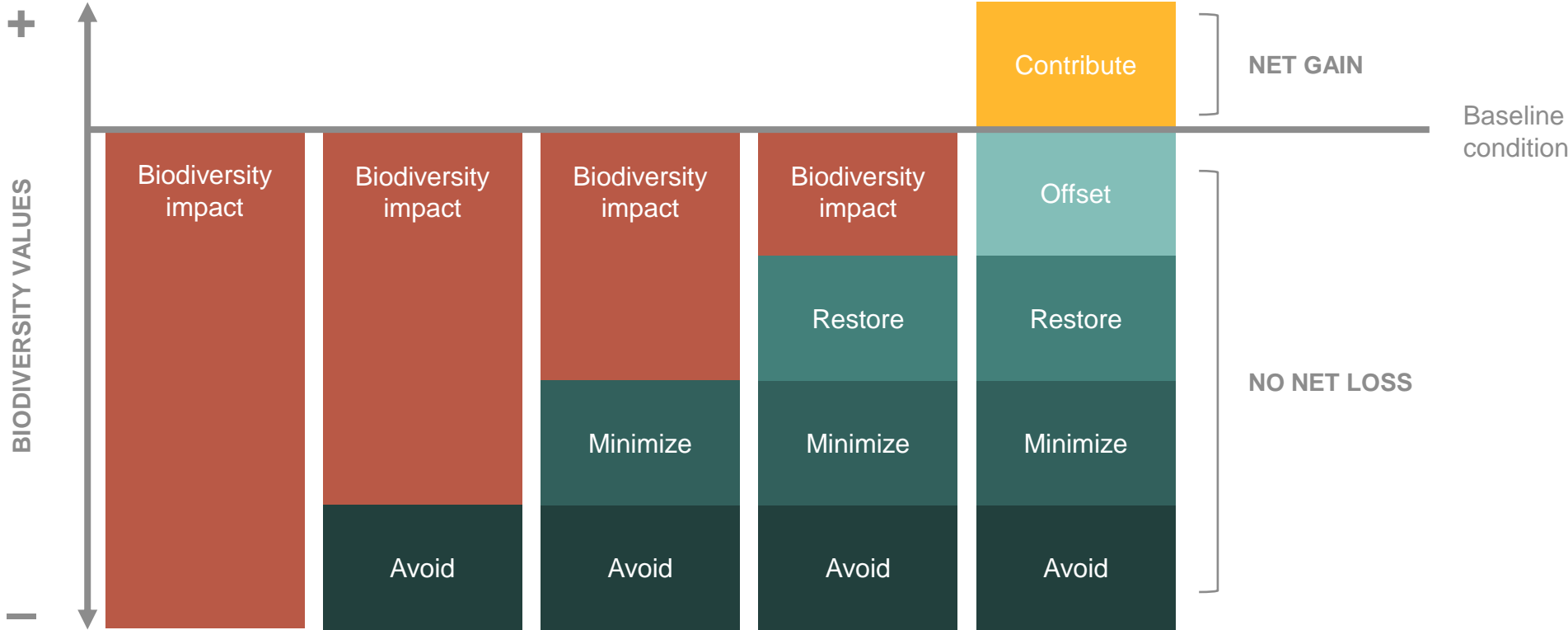
Efficient and agile organization



Prioritizing diversity and culture



No compromise on nature



Required actions to reach targets: biodiversity accounting and biodiversity management

Example:
Hydro Rein's nature positive project in Sweden


On-site energy production systems at the Hydro Extrusions' Vetlanda plant, including ground-mounted solar, rooftop solar and battery storage




 CLIMB is a tool for Nordic conditions that calculates biodiversity within a geographical area

Partnership is the new leadership

Shareholders



Hydro MACQUARIE



Customers



Hydro telenor

Alunorte Alumina do Norte do Brasil S.A. ALBRAS

Partners and local stakeholders



equinor eolus Scatec

Eidsiva. IOWN

Fritzøe Energi Årdal Energi

ATLAS RENEWABLE ENERGY MEAG

A woman with long, dark, wavy hair is shown in profile, looking towards the right. She is wearing a green jacket. The background is a blurred, overcast sky and a body of water, suggesting a coastal or lakeside setting. The overall mood is serene and contemplative.

We make
renewable energy
work for you